



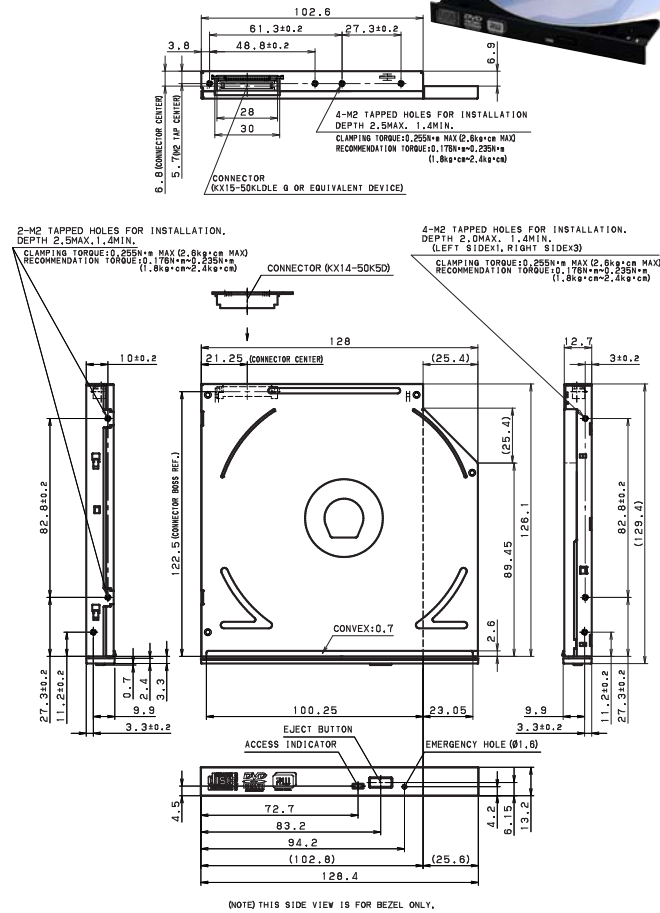
DVD Super Multi Drive

DV-W28EC

4.7GB / 8.5GB Half-inch-height DVD Super Multi Drive

8x DVD±R **8x DVD+RW**
4x DVD±R DL **6x DVD-RW**

- Half-inch-height standard design
- Buffer underrun Prevention
- Supporting disc-at-once, session-at-once, packet write, and track-at-once recording mode
- Horizontal and vertical mounting for most system configurations



Write Speed	DVD+R	2.4 - 8x (ZCLV), 2.4 - 4x (ZCLV), 2.4x (CLV)
	DVD+R DL	2.4 - 4x (ZCLV), 2.4x (CLV)
	DVD+RW	3.3 - 8x (ZCLV), 2.4 - 4x (ZCLV), 2.4x (CLV)
	DVD-R	2 - 8x (ZCLV), 2 - 4x (ZCLV), 2x (CLV), 1x (CLV)
	DVD-R DL	2 - 4x (ZCLV), 2x (CLV)
	DVD-RW	2 - 6x (ZCLV), 2 - 4x (ZCLV), 2x (CLV), 1x (CLV)
	DVD-RAM	3 - 5x (ZCLV), 3x (ZCLV), 2x (ZCLV)
	CD-R	10 - 24x (ZCLV), 10 - 20x (ZCLV)
	CD-RW	10 - 16x (ZCLV), 10x (CLV), 4x (CLV)
		10 - 24x (ZCLV), 10 - 20x (ZCLV), 10 - 16x (ZCLV)
		HS 10x (CLV), 4x (CLV)
		MS 4x (CLV)
Read Speed	DVD-ROM (Single Layer)	8x (CAV)
	(Dual Layer)	6x (CAV)
	DVD-Video *1	4x (CAV)
	DVD±R	8x (CAV)
	DVD±RW	8x (CAV)
	DVD±R DL (Finalized Disc)	6x (CAV)
	DVD-RAM (4.7GB)	3 - 5x (ZCLV)
	CD-ROM	24x (CAV)
	CD-R	24x (CAV)
	CD-RW	24x (CAV)
	CD-DA (DAE)	24x (CAV)
	Play Audio *1	9.3x (CLV)
	Video CD *1	9.3x (CLV)
Disc Diameter		12cm, 8cm
Interface		ATA/ATAPI (IDE)
Data Transfer Rate	Programmed I/O (PIO)	16.6MB/s max. (PIO mode 4)
	Burst DMA	16.6MB/s max. (Multi Word DMA mode 2)
	Burst UDMA	33.3MB/s max. (Ultra DMA mode 2)
Average		130ms typ. Average (CD-ROM, 24x)
Random Access Time		130ms typ. Average (DVD-ROM, 8x)
Data Buffer		2MB
Loading Mechanism		Drawer Type
Environmental Conditions		
	Ambient Temperatures	Operating : 5 to 45°C
	Relative Humidities	Operating : 8 to 80% (non-condensing) *2
Power Requirements		DC+5V ± 5%,
Current Consumption		Standby / Sleep : 60mA / 40mA (Average current max)
		During starting / seek : 2000mA (Peak current max)
MTBF		60,000POH (10% duty)
Safety Standards		Approved by UL, CSA, TÜV, CE, C-tick
Dimensions		128.0W x 12.7H x 129.4D (mm)
Mass (Weight)		180g or less
RoHS Directive		Complied
Remarks		
		Please check the specification sheets for detailed conditions and other information.
		*1 Playback mode
		*2 The maximum wet-bulb temp. is 29.4°C or less

DVD is a trademark of DVD Format/Logo Licensing Corporation registered in the U.S., Japan and other countries.

RW and COMPACT disc ReWritable Ultra Speed are trademarks of Koninklijke Philips Electronics N.V.

Corporate and product names are the respective trademarks or registered trademarks of the companies mentioned. Features and specifications are subject to change without notice. Precaution : To ensure safe handling and operation, read the Instruction Manual before use.

TEAC CORPORATION Media Device Company

TEAC CORPORATION (http://www.teac.co.jp) 3-7-3 Naka-cho, Musashino, Tokyo 180-8550 Japan Phone:81-42-252-5041 Fax:81-42-255-2554

TEAC AMERICA, INC. (http://www.teac.com) 7733 Telegraph Road, Montebello, California 90640, U.S.A. Phone:1-323-726-0303 Fax:1-323-727-7656

TEAC EUROPE GmbH. (http://www.teac.de) Bahnstrasse 12, 65205 Wiesbaden-Erbenheim, Germany Phone:49-611-71580 Fax:49-611-7158-392

TEAC SSE LTD. Unit 19&20, The Courtyards Hatters Lane Watford Hertfordshire WD18 8TE, U.K. Phone:44-8451-302515 Fax:44-1923-236290

TAIWAN TEAC CORPORATION (Taipei Office) (http://www.teac.com.tw) 3F No.45, Sec.1 Min Chuan E. Road, 104 Taipei Taiwan R.O.C. Phone:886-2-2597-8608 Fax:886-2-2597-8591

TEAC ELECTRONICS (M) SDN BHD (http://www.teac.com.my) Lot 22, Batu Berendam Ftz III, Batu Berendam, 75350 Melaka, Malaysia. Phone:60-6-2843402 Fax:60-6-2843471

TEAC SHANGHAI LTD. (http://www.teacchina.com.cn) Rm2505-2506, Tower A, City Center of Shanghai 100 Zun Yi road, China 200051 Phone:86-21-6237-2838 Fax:86-21-6237-2732

©Copyright TEAC CORPORATION 2006

PRINTED IN JAPAN 0906 PDF , DS-188B